

SOUND GUARD

THE SILENT STEEL FRAMING SYSTEM

MAJOR PROJECTS



Tested by Multiple Nationally
Recognized Acousticians:

Riverbank Acoustical
LABORATORIES™
An AIA Technical Center

SSA acoustics

Big Sky Acoustics

NWAA Labs

www.SCAFCO.com
www.SoundGuardWall.com



» The SoundGuard™ Silent Steel Framing System

NEW Interior Sound Rated Framing System

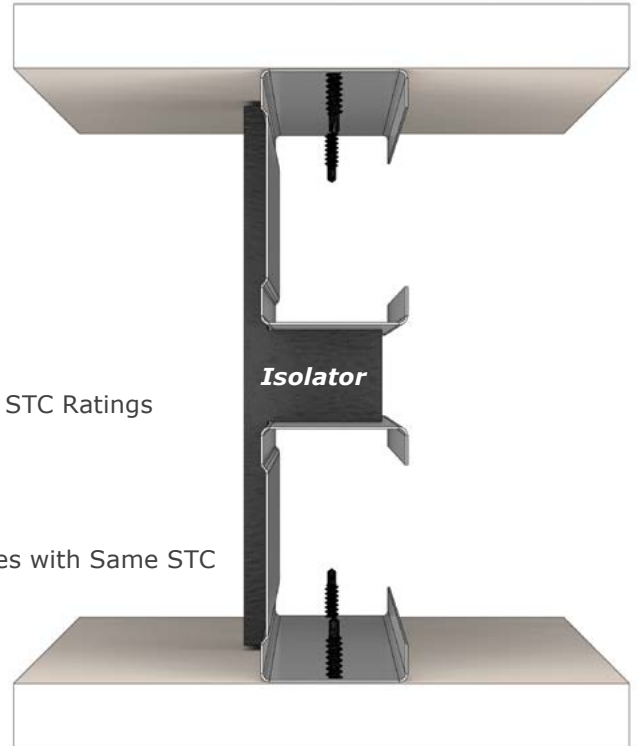
Patent #9,523,197 B2 U.S.A.

Features and Benefits »

- **Narrower Walls** - Which Means More Usable Square Feet
- **Lower Material Costs** - No CRC, Thinner Steel, Smaller Web
- **Faster Build-out** - Single Wall Installation
- **STC-Equal or Better**
- **1 & 2 HOUR Fire Rating UL V463**
- **Available in 3½", 4", and 6" Wall Assemblies**

Architect/Owner »

- **Narrower Allowable Wall Thicknesses** with Better or Equal STC Ratings
 - Increased Room Dimensions
 - Greater Saleable Square Footage
 - Revenue Gains for Owner
- **Equivalent** to Many GA WP Partition and Chase Wall Assemblies with Same STC
 - Eliminates Drywall and/or Resilient Sound Channel
 - Increases Rentable Square Footage
 - Half as Many Studs and Track to Install
 - No Cross Bracing and CRC Lateral Bracing



Contractor »

Replaces GA WP Partition and Chase Wall Assemblies with equal or lesser wall thicknesses

- **Lower Material Costs – Superior STC Ratings**
 - Eliminates Layers of Drywall
 - Reduces the Amount of Studs and Track to Install
 - No Resilient Sound Channel Required
 - No Cross Bracing and CRC Lateral Bracing
 - **Faster Build-Out**, Saves Labor, Field Tested, Contractor Approved, Pre-Assembled With Built-in Air Space
 - **Installs Just Like a Typical Single Stud**
 - **Risk Reduction** Quoting, Planning, Stocking, Waste, Labor Over Runs, Durations
 - **Can Be Used With Slotted Track** in 3½", 4", and 6" Widths
 - **SCAFCO Engineering Design / Build Solutions**
 - **Substitution Requests** SCAFCO Engineering Will Assist With This Process.
- Call:** 509-789-8669
Email: Technical@SCAFCO.com



Maximizing Mixed-Use



» Urban Green Villa

- **GC** – JTM Construction
- **Architect** – Gwest Architecture
- **Engineer** – Brien Structural Engineers
- **Subcontractor** – Sessler
- **Acoustician** – SSA Acoustics

Highlights: A 12-story mixed-use tower in the Belltown neighborhood of Seattle, the Urban Green Villa was designed to create a garden atmosphere in the middle of a bustling city. The building houses 116 luxury apartment units. Retail at the ground level, as well as open-air amenities at the mid- and roof levels, provide variety.

Why SoundGuard?: As construction costs per square foot continue to skyrocket in cities like Seattle, SoundGuard maximizes space without sacrificing sound quality. Apartment dwellers value their privacy, and with SoundGuard's stellar performance in rigorous third-party testing, buyers trust that they'll get their money's worth.



Two Birds, One Stone

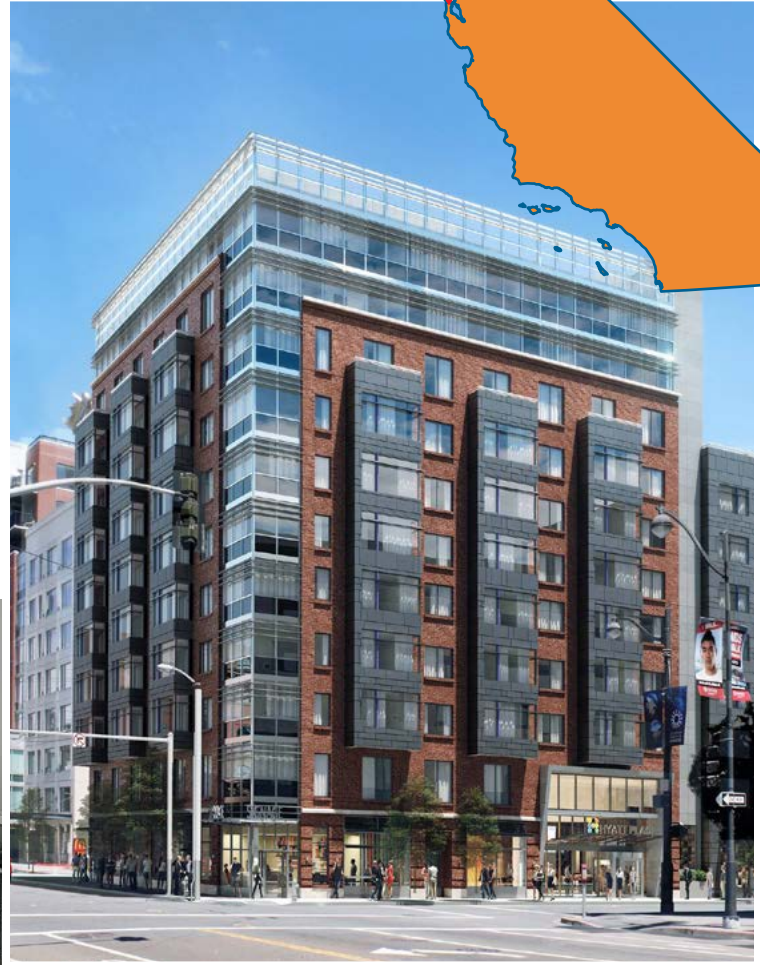
» Hyatt Place San Francisco

- **GC** – Charles Pankow Builders
- **Architect** – Stanton Architecture
- **Subcontractor** – LB Construction
- **Acoustician** – Salter

Highlights: This 230-room, 120,000-square-foot hotel is located just one block from Oracle Park, home of the San Francisco Giants. With vegetated roofs, a grey water system, and recyclable steel, the building hold LEED Platinum certification.

Why SoundGuard?: When it comes to hotel projects, SoundGuard benefits both the contractor and the end user! It installs like a steel stud and doesn't rely on expensive drywall substitutes, so it saves money in materials and labor while giving hotel guests the restful experience they have come to expect from their accommodations.

San Francisco, CA



Five-Star Performance

» The Hotel at the Mark

- GC – JTM Construction
- Architect – ZGF Architects
- Subcontractor – Mehrer Drywall
- Acoustician – SSA Acoustics

Highlights: Spanning 15 floors of Seattle's iconic F5 Tower, the five-star Hotel at the Mark offers pure luxury from its lounges to its spa and fitness center – and, of course, in its 189 guest rooms, which are nothing short of serene thanks to SoundGuard.

Why SoundGuard?: The team at The Mark chose to rely SoundGuard not only between rooms, but also in corridor walls, ensuring the total comfort of each and every guest.



Academic Excellence

» Bozeman Gallatin High School

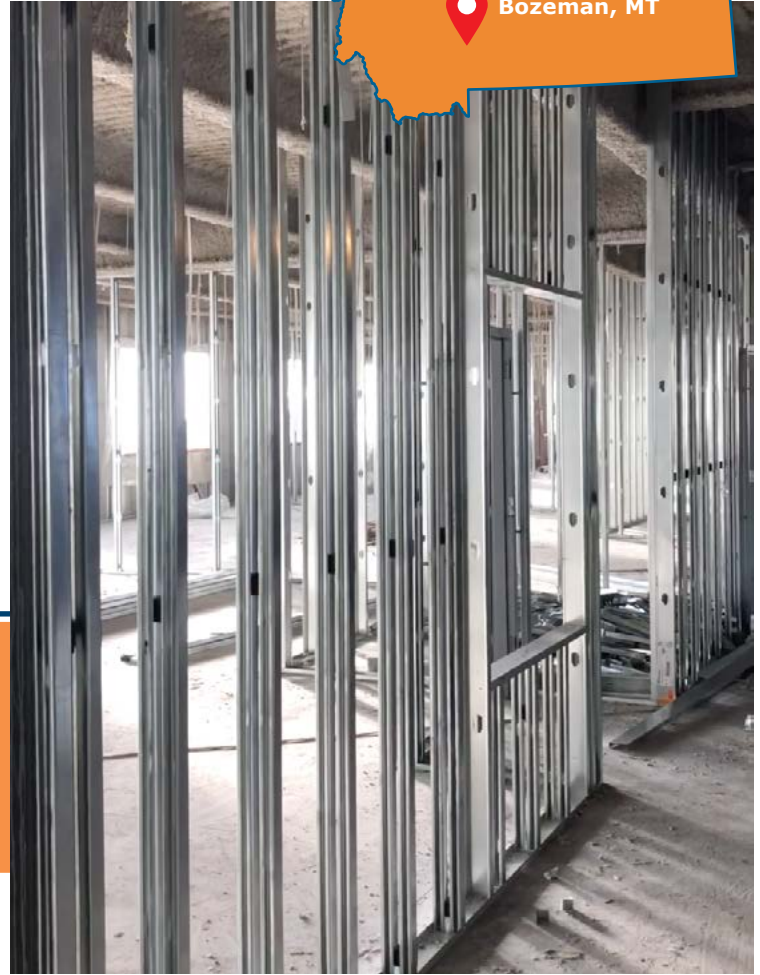
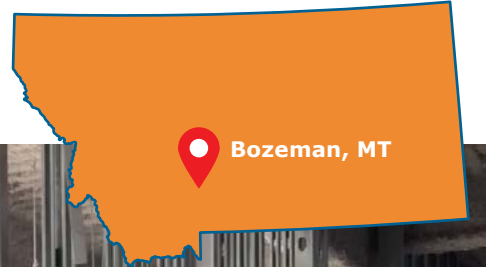
- **GC** – Langlas & Associates
- **Architect** – CTA Architects
- **Subcontractor** – RDJ Brothers
- **Acoustician** – Big Sky Acoustics

Highlights: This 296,000-square-foot high school serves over 2,000 students in Bozeman, Montana. More than 56,000 lineal feet of SoundGuard went into this project. “It gives square footage back to the customer,” says a representative of Langlas and Associates’ Bozeman office, which specified the product.

Why SoundGuard?: SoundGuard’s proven acoustical performance contains classroom noise and helps maintain the academic atmosphere of schools, colleges, and other educational institutions.

“It gives square footage back to the customer.”

Langlas and Associates



Upping the Ante

» Thunder Valley Casino Poker Room

- **GC** – Flint Builders
- **Architect** – YWS Architects
- **Subcontractor** – PCI and LB Construction
- **Acoustician** – Chips Davis Designs

Highlights: In addition to live poker games 24 hours a day, the Poker Room at Thunder Valley Casino Resort is the venue of choice for events like WPT Deepstacks, WSOP Circuit, and the Ante Up World Championship.

Why SoundGuard?: By eliminating the need for a second wall, SoundGuard keeps this 27-table poker room (which expands up to 50 tables for major tournaments) from feeling noisy or crowded.



Brands You Trust Rely on SoundGuard

» SoundGuard has been featured in office projects for some of the world's biggest, most innovative companies.

Google

facebook

HYATT

Uber

SCAFCO Steel Framing

With 60 years of manufacturing experience, SCAFCO has gained a worldwide reputation for high-quality products, great customer service, and strong corporate ethics. Our comprehensive team of engineers, administrative and office staff, and craftsmen focus on providing customer driven products. We currently have manufacturing facilities in Spokane, WA and Stockton, CA. We also feature press brakes and shears capable of making on demand, custom parts up to 24' in length.

Engineering Services

For assistance with ordering or questions on your project, utilize SCAFCO Engineering Services:

Call: 509-789-8669

Email: Technical@SCAFCO.com

MANUFACTURING LOCATIONS



★ **SCAFCO Spokane**
2800 E. Main Ave
Spokane, WA 99202
509-343-9000

★ **SCAFCO Stockton**
2525 S. Airport Way
Stockton, CA 95206
209-670-8053

23-7SoundGuardProjectsBrochure

www.SCAFCO.com



SGPLIT-1000-0919