

BXUV.U417 Fire Resistance Ratings - ANSI/UL 263

Page Bottom

Design/System/Construction/Assembly Usage Disclaimer

- Authorities Having Jurisdiction should be consulted in all cases as to the particular requirements covering the installation and use of UL Listed or Classified products, equipment, system, devices, and materials.
- Authorities Having Jurisdiction should be consulted before construction.
- Fire resistance assemblies and products are developed by the design submitter and have been investigated by UL for compliance with applicable requirements. The published information cannot always address every construction nuance encountered in the field.
- When field issues arise, it is recommended the first contact for assistance be the technical service staff provided by the product manufacturer noted for the design. Users of fire resistance assemblies are advised to consult the general Guide Information for each product category and each group of assemblies. The Guide Information includes specifics concerning alternate materials and alternate methods of construction.
- Only products which bear UL's Mark are considered as Classified, Listed, or Recognized.

Fire Resistance Ratings - ANSI/UL 263

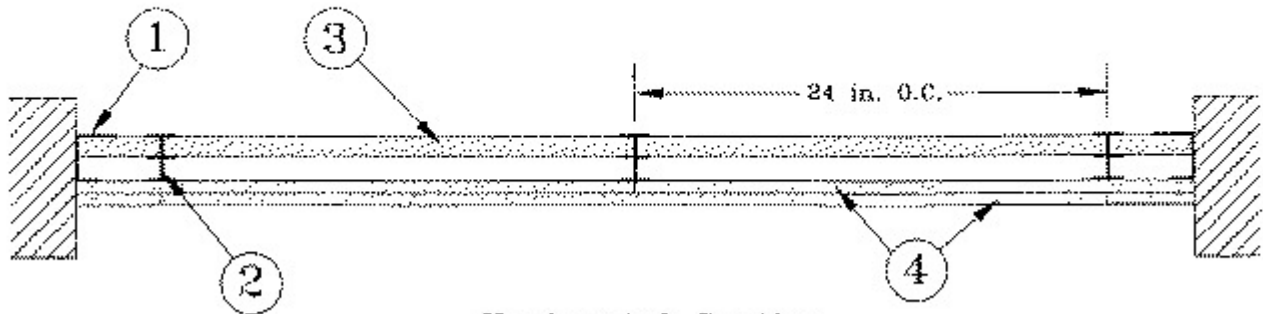
See General Information for Fire Resistance Ratings - ANSI/UL 263

Design No. U417

September 15, 2010

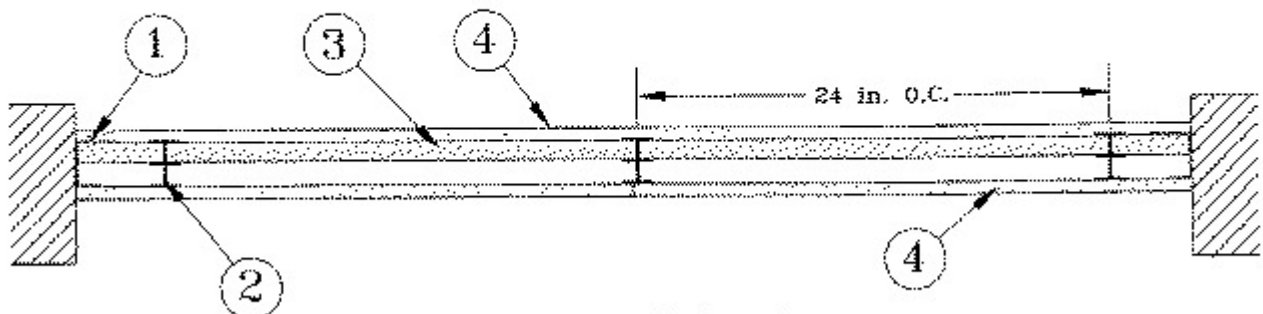
Nonbearing Wall Ratings — 1, 2 or 3 Hr

System A - 2 Hr.



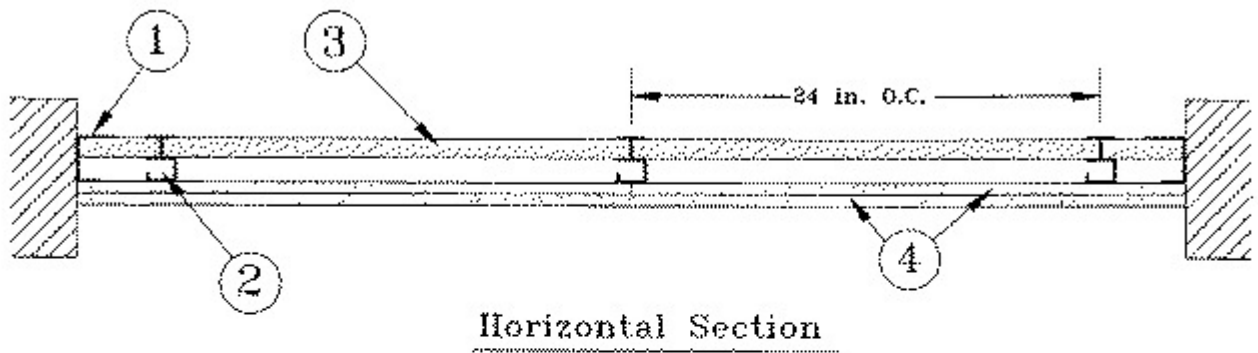
Horizontal Section

System B - 2 Hr.

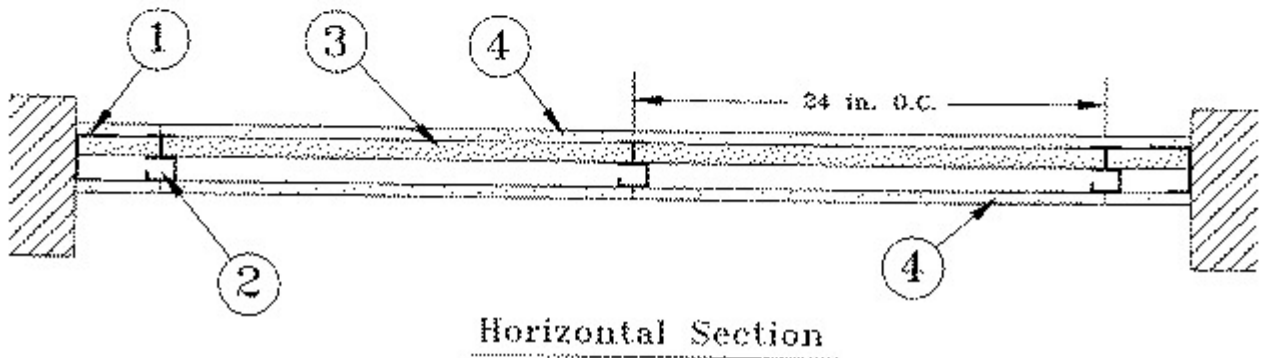


Horizontal Section

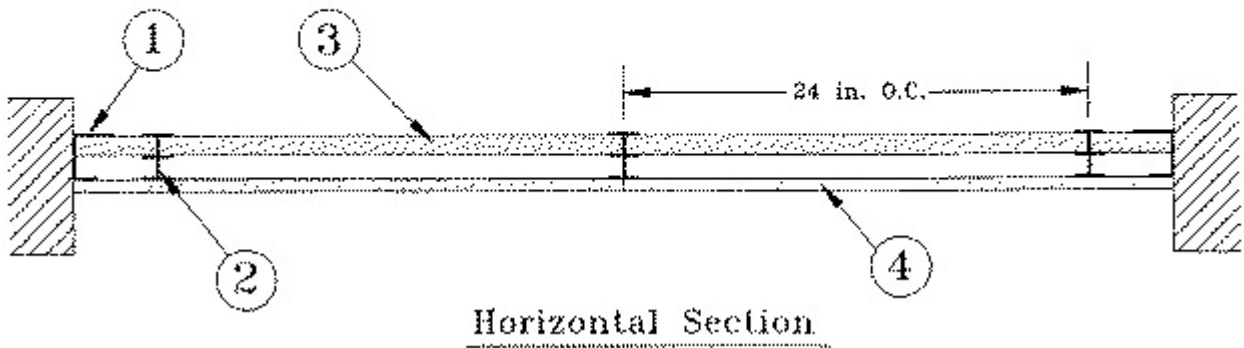
System C - 2 Hr.



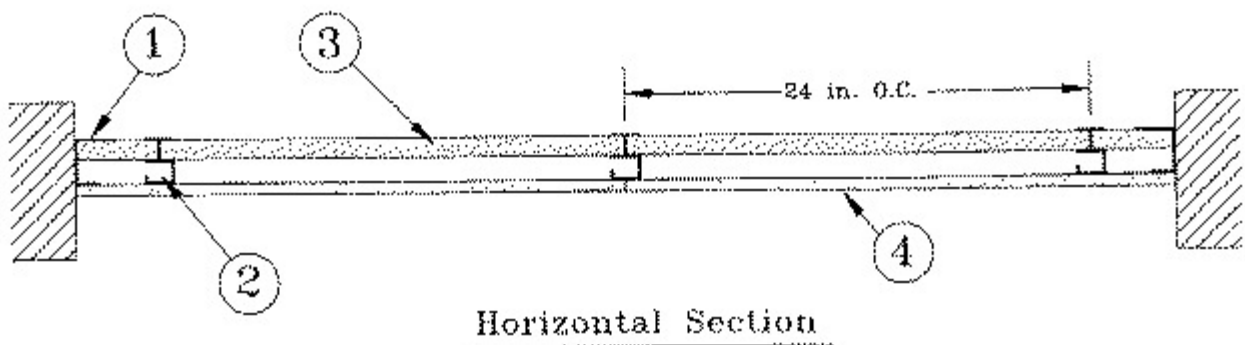
System D - 2 Hr.



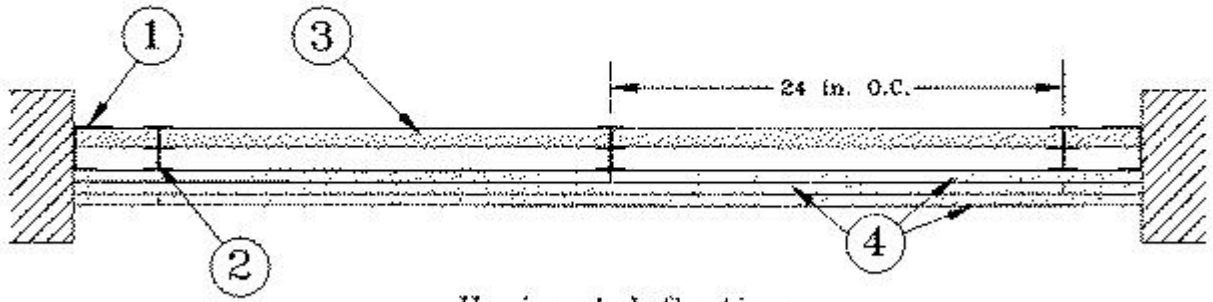
System E - 1 Hr.



System F - 1 Hr.

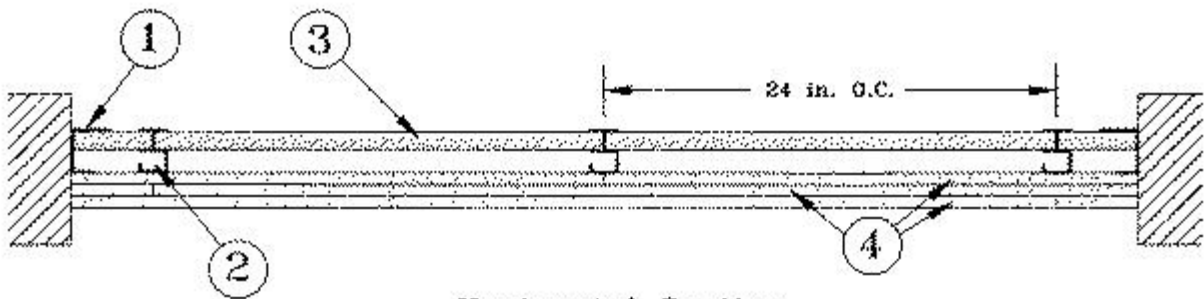


System G - 3 Hr.



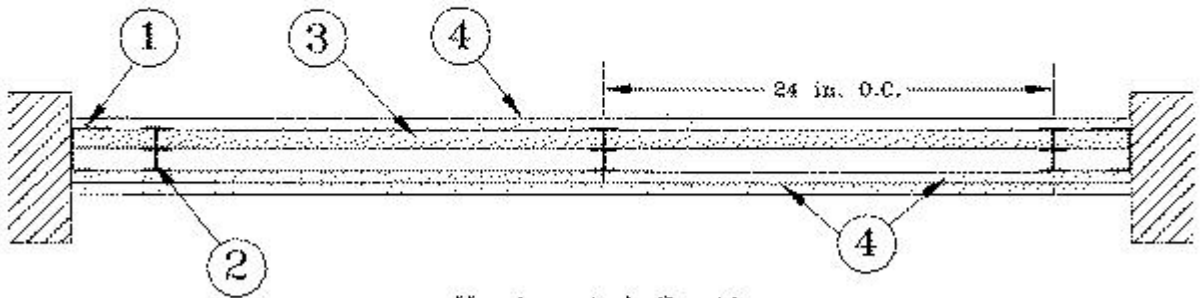
Horizontal Section

System H - 3 Hr.



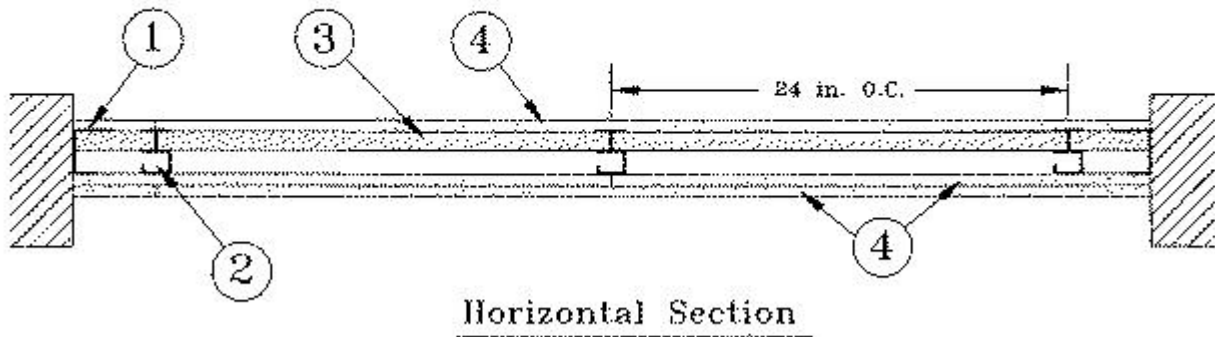
Horizontal Section

System I - 3 Hr.



Horizontal Section

System J - 3 Hr.



1. **Floor, Side and Ceiling Runners** — "J" -shaped runner, min 2-1/2 in. deep, with unequal legs of 1-1/8 in. and 2-1/8 in., fabricated from min 25 MSG galv steel. Runners positioned with short leg toward finished side of wall. Runners attached to structural supports with steel fasteners located not greater than 2 in. from ends and not greater than 24 in. OC.

2. **Steel Studs** —

Systems A, B, E, G and I

"I" -shaped studs fabricated from min 25 MSG galv steel, min 2-1/2 in. deep, 1-1/2 in. wide. Studs contain 3/4 in. wide by 2-1/4 in. high holding tabs spaced 2-3/4 in. OC. Cut to lengths 5/8 in. less than floor-to-ceiling height and spaced 24 in.

Systems C, D, F, H and J

"C-T" -shaped studs, min 2-1/2 in. deep, 1-1/2 in. wide, fabricated from min 25 MSG galv steel. Cut to lengths 5/8 in. less than floor-to-ceiling height and spaced 24 in. or

"C-H" - shaped studs, min 2-1/2 in. deep, fabricated from min 25 MSG galv steel. Cut to lengths 5/8 in. less than floor-to-ceiling height and spaced 24 in. OC.

3. **Gypsum Board*** — Gypsum liner panels, nom 1 in. thick, 24 in. wide. Panels cut max 1 in. less in length than floor to ceiling height. Vertical edges inserted in "T" -shaped section of "C-T" studs, the "H"-shaped section of "C-H" studs or tabs holding tabs of "I" studs. Free edge of end panels attached to long leg of "J" -runners with 1-5/8 in. long Type S self-drilling, self-tapping bugle head steel screws spaced not greater than 12 in. OC.

CERTAINTED GYPSUM INC — Types ProRoc Shaftliner, EGRG Shaftliner, GlasRoc Shaftliner. Types EGRG and GlasRoc Shaftliner limited to 1 and 2 hour systems.

4. **Gypsum Board*** —

Systems A and C

For use with **Type ProRoc Shaftliner** liner panels - Gypsum panels, nom 1/2 or 5/8 in. thick, 48 in. wide, applied in one of the following methods. Method 1 — Base layer installed horizontally to steel studs with 1 in. long Type S self-drilling, self-tapping bugle head steel screws spaced 24 in. OC. Face layer installed vertically to steel studs with 1-5/8 in. long Type S self-drilling, self-tapping bugle head steel screws spaced 24 in. OC, staggered 12 in. from base layer screws. Method 2 — Base layer installed vertically to steel studs with 1 in. long Type S self-drilling, self-tapping bugle head steel screws spaced 24 in. OC. Face layer installed horizontally to steel studs with 1-5/8 in. long Type S self-drilling, self-tapping bugle head steel screws spaced 24 in. OC, staggered 12 in. from base layer screws. Additionally, Type G screws to be installed at the center of each stud cavity, 1-1/2 in. from both sides of the horizontal joint. For the 1/2 in. thick and 5/8 in. thick boards, the Type G screw length shall be 1-1/4 in. and 1-1/2 in. long, respectively.

For use with **Type EGRG or GlasRoc Shaftliner** liner panels - Gypsum panels, nom 1/2 or 5/8 in. thick, 48 in. wide, applied in one of the following methods. Method 1 — Base layer installed horizontally to steel studs with 1 in. long Type S self-drilling, self-tapping bugle head steel screws spaced 24 in. OC. with the 1st screws installed 12 in. from the board edge. Face layer installed vertically to steel studs with 1-5/8 in. long Type S self-drilling, self-tapping bugle head steel screws spaced 12 in. OC. with the 1st and 2nd screws spaced 3/4 in. and 6-3/4 in. from the board edge, staggered 12 in. from base layer screws. Method 2 — Base layer installed vertically to steel studs with 1 in. long Type S self-drilling, self-tapping bugle head steel screws spaced 24 in. OC. with the 1st screws installed 12 in. from the board edge. Face layer installed horizontally to steel studs with 1-5/8 in. long Type S self-drilling, self-tapping bugle head steel screws spaced 24 in. OC., with the 1st and 2nd screws installed 3/4 in. and 6-3/4 in. from the board edge, staggered 12 in. from base layer screws. Additionally, Type G screws to be installed at the center of each stud cavity, spaced 12 in. OC., 1-1/2 in. from both sides of the horizontal joint. For the 1/2 in. thick and 5/8 in. thick boards, the Type G screw length shall be 1-1/4 in. and 1-1/2 in. long, respectively.

CERTAINTED GYPSUM INC — 1/2 in. thick ProRoc Type C, 5/8 in. thick ProRoc Type C or 5/8 in. thick ProRoc Type X

CERTAINTED GYPSUM CANADA INC — ProRoc Type X or ProRoc Type Abuse-Resistant

Systems B and D

Gypsum panels, nom 1/2 or 5/8 in. thick, 48 in. wide, applied vertically to steel studs with 1 in. long Type S self-drilling, self-tapping bugle head steel screws spaced 12 in. OC. Vertical joints on opposite sides of wall staggered a min of 24 in.

CERTAINTED GYPSUM INC — 1/2 in. thick ProRoc Type C, 5/8 in. thick ProRoc Type C or 5/8 in. thick ProRoc Type X

CERTAINTED GYPSUM CANADA INC — ProRoc Type X or ProRoc Type Abuse-Resistant

Systems E and F

Gypsum panels, nom 5/8 in. thick, 48 in. wide, applied vertically with edges centered over studs, with 1 in. long Type S self-drilling, self-tapping bugle head steel screws spaced 12 in. OC.

CERTAINTED GYPSUM INC — ProRoc Type X, SilentFX or ProRoc Type C

CERTAINTED GYPSUM CANADA INC — ProRoc Type X or ProRoc Type Abuse-Resistant

Systems G and H

Gypsum panels, nom 5/8 in. thick, 48 in. wide applied in three layers to one side of the assembly. Base layer applied vertically, remaining layers applied vertically or horizontally. Base layer attached to studs with 1 in. long Type S steel screws spaced 24 in. OC. Middle layer attached to studs with 1-5/8 in. long Type S steel screws spaced 24 in. OC when installed vertically or 16 in. OC when installed horizontally. Face layer attached to studs with 2-1/4 in. long Type S steel screws spaced 16 in. OC when installed vertically or 12 in. OC when installed horizontally. Screws offset 6 in. from layer below. Horizontal joints on adjacent layers staggered a min of 12 in. When applied horizontally, 1-1/2 in. long Type G screws to be installed at the center of each stud cavity, 1-1/2 in. from both sides of the horizontal joint. Vertical joints centered over studs and staggered 24 in. on adjacent layers.

CERTAINTED GYPSUM INC — ProRoc Type C

Systems I and J

Gypsum panels, nom 5/8 in. thick, 48 in. wide applied in two layers to one side of the assembly and one layer to the other side. On the two layer side, base layer applied vertically, face layer applied vertically or horizontally. Base layer attached to studs with 1 in. long Type S steel screws spaced 24 in. OC. Face layer attached to studs with 1-5/8 in. long Type S steel screws spaced 24 in. OC when installed vertically or 16 in. OC when installed horizontally. Screws offset 6 in. from layer below. When applied horizontally, 1-1/2 in. long Type G screws to be installed at the center of each stud cavity, 1-1/2 in. from both sides of the horizontal joint. Vertical joints centered over studs and staggered 24 in. on adjacent layers. On the one layer side, panels applied vertically and attached to studs with 1 in. long Type S steel screws spaced 12 in. OC. Vertical joints on opposite sides of wall staggered min 24 in. OC.

CERTAINTED GYPSUM INC — ProRoc Type C

5. Joint Tape and Compound —

(Not shown) — Joints covered with joint compound and paper or mesh tape. Screw heads covered with joint compound.

*Bearing the UL Classification Mark

Last Updated on 2010-09-15

[Questions?](#)

[Print this page](#)

[Notice of Disclaimer](#)

[Page Top](#)

Copyright © 2010 Underwriters Laboratories Inc.®

The appearance of a company's name or product in this database does not in itself assure that products so identified have been manufactured under UL's Follow-Up Service. Only those products bearing the UL Mark should be considered to be Listed and covered under UL's Follow-Up Service. Always

look for the Mark on the product.

UL permits the reproduction of the material contained in the Online Certification Directory subject to the following conditions: 1. The Guide Information, Designs and/or Listings (files) must be presented in their entirety and in a non-misleading manner, without any manipulation of the data (or drawings). 2. The statement "Reprinted from the Online Certifications Directory with permission from Underwriters Laboratories Inc." must appear adjacent to the extracted material. In addition, the reprinted material must include a copyright notice in the following format: "Copyright © 2010 Underwriters Laboratories Inc.®"

An independent organization working for a safer world with integrity, precision and knowledge.

