

ProRoc[™]
BRAND

Area Separation Walls

From BPB



ProRoc[™] Shaftliner for Area Separation Walls



Area Separation Walls



UL Design U366 **RAL TL 100-176 for STC ratings**

For further technical information regarding sound control and fire resistance refer to the following:
Gypsum Association Fire Resistance Design Manual – GA-600

Non-load bearing

Fire Rating - 2 Hour

Finish Rating - 120 Minutes

Area Separation Walls offer the advantages of fire resistance and noise attenuation between adjoining housing units. These walls offer a 2-hour fire rating line of defense between units and provide STC sound ratings up to 60-64.

Area Separation Walls are solid type separation walls assembled using 1" ProRoc™ Shaftliner Type X gypsum board, metal framing and 1/2" ProRoc™ Regular gypsum board for the interior finish. The wall is easily stacked, floor to floor, allowing progressive construction. Breakaway aluminum clips are used to attach the interior wall to adjacent structural framing and provide lateral support. When one side is exposed to fire, the clips yield from the heat and break away allowing the gypsum board interior finish on the fire side to collapse. Thus the area separation wall remains intact to protect neighboring spaces.

Area Separation Walls can be built higher, are easier and faster to construct, lighter weight, and take up less space than masonry wall systems.

COMPONENT SPECIFICATIONS

ProRoc™ Shaftliner Type X Gypsum Board		Steel Framing
ASTM	C 1396/C 36, C 442	C-Track 25 Ga, 2"
Thickness	1" (25.4 mm)	H-Stud 25 Ga, 2"
Width	2' (609.5 mm)	Alum Clip .063", 2"
Lengths	8', 12' (2438 mm, 3658 mm)	
Approx. Weight	4.1 psf (20 kg/m ²)	
Edges	Beveled	
Paper	Green Face, Green Back	

Consult local building codes for regulations in your area. For further information consult a BPB sales representative.

SURFACE BURNING CHARACTERISTICS

ProRoc™ Shaftliner Type X Gypsum Board		
Flame Spread	0 - 25 (Class I, Class A)	When tested in accordance with the American Society for Testing and Materials ASTM E 84.
Smoke Developed	0	

TECHNICAL REFERENCES

For additional information on application and finishing consult:

- BOCA National Building Code
- SBCCI Standard Building Code
- ICBO Uniform Building Code
- ICC International Codes
- UL Fire Resistance Directory - UL Design U366
- Gypsum Association Brochure GA-290
- ASTM E 84, E 90, E 119
- Riverbank Acoustical Laboratories TL100-176



WORKING WITH THE

HANDLING AND STORAGE

ProRoc™ gypsum boards should be stacked flat on a smooth, level surface, not stored directly on the ground. When spacers are used, position them closely enough together to minimize warpage. Care should be taken to prevent damage to edges and corners. Always keep ProRoc™ gypsum board dry prior to installation.

BPB assumes no responsibility for consequential damages that may result from the presence of standing water or where moisture is in direct contact with shaftwall system components.

CUTTING

The score and snap method is a fast and efficient way to cut gypsum board.

Steps:

1. On the face side, position a straight edge along the line of cut.
2. Score sheets with a knife or other suitable tool.
3. With a quick, firm motion, snap back away from the face.
4. The back paper can either be cut with

a knife or separated by snapping the piece in the opposite direction.

5. Smooth all cut ends and edges to ensure tight joints.

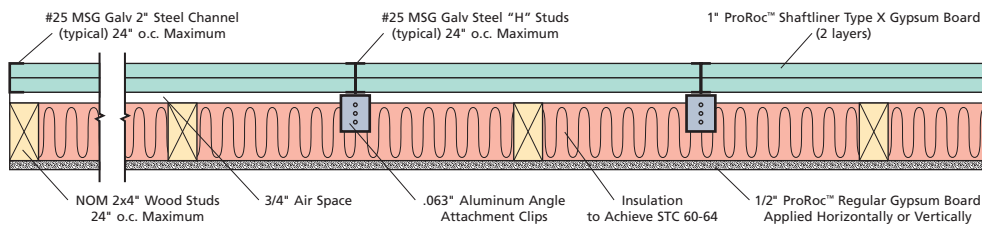
Gypsum boards can also be cut with a saw. For information on avoiding dust inhalation, refer to a Material Safety Data Sheet available where BPB products are sold. Safety glasses should always be worn when using power tools. To make cut outs, score around the perimeter on the face and back and tap out the waste piece from the face side. Cut outs can also be made with a drywall saw.

INSTALLATION

Steel Framing and Installation of 1" ProRoc™ Shaftliner Type X board for Solid Type Area Separation Walls as the framing for the common wall of one unit. An area separation wall can be constructed by following these steps before continuing to frame the adjacent unit.

1. Attach 2" wide C-Track to slab at bottom of wall using suitable fasteners at a minimum of 24" o.c. Allow a 3/4" space from wood stud framing on each side of the area separation wall.
2. Install vertical C-Track at the beginning of the wall and support as needed.
3. Insert two sections of 1" ProRoc™ Shaftliner Type X gypsum board in bottom channel and plumb to vertical C-Track.
4. Install 1" ProRoc™ Shaftliner Type X boards vertically. Continue wall as needed by placing H-Studs between the proceeding panels every 24" for the length of the wall and enclose the end boards with vertical C-Track.
5. Cap the wall assembly before continuing higher with either an H-Stud or two pieces of C-Track fastened back-to-back.
6. Attachment Clips: Aluminum angle, 0.063" thick, min. 2" wide with min. 2" and 2-1/4" legs. Clips secured with Type S screws 3/8" long to "H" studs and with Type W screws 1-1/4" long to wood framing through holes provided in clip. Clips spaced a max of 10' o.c.

EXPOSED TO FIRE FROM AREA SEPARATION WALL SIDE ONLY

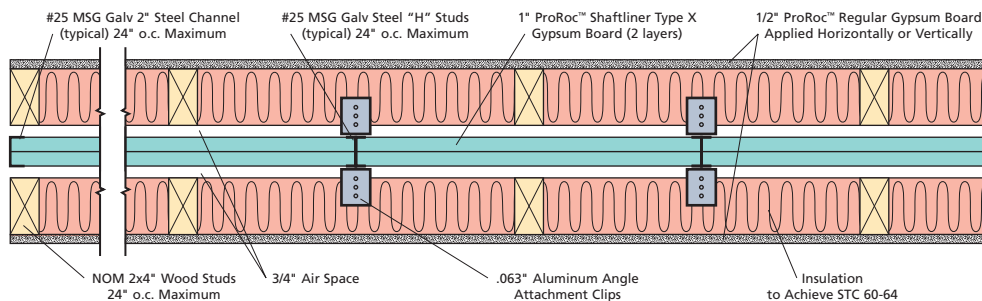


FIRE TEST
UL DESIGN U366

THICKNESS
7-1/4"
(184 mm)

APPROX. WT.
11 psf
(56 kg/m²)
STC 60-64

EXPOSED TO FIRE FROM EITHER SIDE



FIRE TEST
UL DESIGN U366

THICKNESS
12-1/2"
(317 mm)

APPROX. WT.
14 psf
(70 kg/m²)
STC 60-64

Sound ratings (STC 60-64) are based on installed adjoining wood framed construction finished with 1/2" thick drywall on interior wall, with 3-1/2" fiberglass insulation in the framing cavities.

PRODUCT

vertically between wood framing and "H" studs for separation walls up to 23' high. For separation walls up to 44' high, clips spaced as described above for the upper 24' and the remaining wall area below requires clips spaced a max. 5' o.c. vertically between wood framing and "H" studs.

7. This assembly can be repeated, per plan, up to 44 feet high. Cap the top of the assembly with 2" C-Track and protect the entire installation from moisture.
8. Where required, use an approved sealant to caulk around the perimeter of wall sections.

Interior Finish Wall:

9. Wood Studs - Nom 2 by 4" max. spaced 24" o.c. Studs cross-braced at mid-height where necessary for clip attachment. Min. 3/4" separation between wood framing and area separation wall.
10. ProRoc™ Regular gypsum board min. 1/2" thick, 4' wide, applied either

horizontally or vertically. Wall board attached to studs with 1-1/4" long steel drywall nails or 1-1/4" Type W drywall screws spaced 8" o.c. Vertical joints located over studs. Joints covered with paper tape and joint compound. Nail heads covered with joint compound.

Surface Preparation of Finished Sides

Joints, corners and fastener heads on the face side shall be finished in accordance with ASTM C 840, the GA-216, the Fire Resistance Design Manual GA-600 and Joint Compound manufacturer's instructions. Joint Compound shall comply with ASTM C 475.

1. No surface treatment shall be done until the interior temperature has been maintained at a minimum of 50°F (21°C) for at least 48 hours prior to application of compounds and until all materials have completely dried. Adequate continuous ventilation must also be provided.
2. Fill and level joints with joint compound.

3. Embed tape into the wet compound and allow to dry. For inside corners, crease the tape and work it into joint.
4. Apply a second coat of compound across the joint and feather to approximately 4" on each side.
5. Apply a third coat and feather to approximately 6" on each side.
6. Allow each coat to dry before proceeding.
7. Attach corner bead to outside corners and apply three coats of joint compound. Feather out each coat as described in steps 4-6.
8. Spot cover all fastener heads with three coats of joint compound applied in different directions.
9. Lightly sand the last coat of all treated areas, taking care not to rough the surrounding gypsum board paper. Smoothing can also be accomplished with a damp sponge.

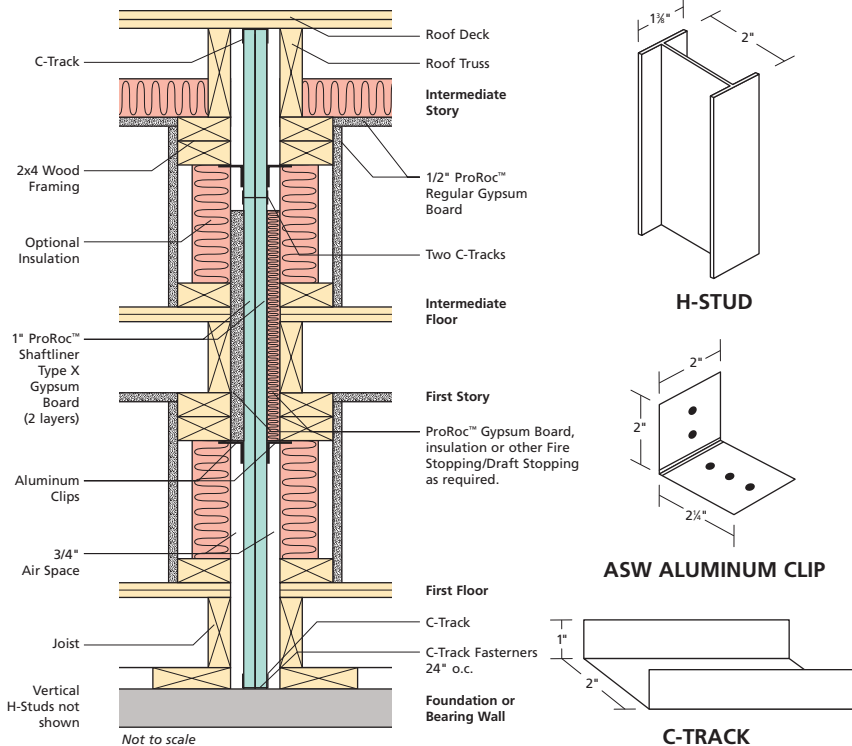
Finishing Interior Walls

ProRoc™ gypsum board can be finished with paint, texture or wallpaper. High quality primer/sealer must be used prior to any type of final decoration. For high gloss paint and severe lighting conditions, a thin skim coat of joint compound should be applied across the entire surface (Level 5 Finish). This will help minimize the irregularities and porosity differences between the materials. Refer to GA-214, GA-216, and ASTM C 840 for additional finishing instructions. Finishing is not required on area separation wall.

LIMITATIONS

- Area Separation Walls are for non load-bearing partitions only.
- ProRoc™ gypsum board must not be used in areas that are continuously or repeatedly exposed to excessive moisture or dampness.
- Systems shall not be exposed to sustained temperatures exceeding 125°F (52°C).
- ProRoc™ gypsum board should not come in direct contact with concrete, masonry or other surfaces that have a high moisture content.
- Unsupported wall height between floors should not exceed 12 feet. The assembly may be used in buildings up to 4 stories with a total height not to exceed 44 feet.
- Penetrations in Area Separation Walls are usually not allowed by code authorities.

TYPICAL INSTALLATION



LIMITED WARRANTY

BPB expressly warrants title and that the products sold by it hereunder are free from defects in materials at the time of shipment. THIS WARRANTY IS LIMITED TO THE ORIGINAL OWNER, AND MAY NOT BE ASSIGNED OR TRANSFERRED. This Warranty may not be amended, restated or enlarged by any BPB representative, written sales information or drawings. EXCEPT FOR SUCH EXPRESS WARRANTY, BPB MAKES NO WARRANTY OF ANY KIND WHATSOEVER, EXPRESS OR IMPLIED AND ALL WARRANTIES OF MERCHANTABILITY, FITNESS FOR A PARTICULAR PURPOSE, AND OTHER WARRANTIES OF ANY KIND ARE HEREBY DISCLAIMED BY BPB AND EXCLUDED. PURCHASER AGREES THIS HAS BEEN NEGOTIATED AND CONSENTS HERETO. AS PURCHASER'S SOLE AND EXCLUSIVE REMEDY, BPB shall, at BPB's sole option, replace or repair any defective products, refund the purchase price paid for defective products, or grant a reasonable allowance based on the purchase price of such defective products. Any claims or exceptions by Purchaser for defective products must be made in writing within 30 days after Purchaser's receipt of shipment and in all events before installation is commenced, and Purchaser shall give BPB an opportunity to investigate. BPB IS FURNISHING BASIC PRODUCTS

AT STANDARD PRICES AND IS NOT INSURING PURCHASER AGAINST POSSIBLE CONSEQUENCES OF ERROR, OMISSION OR NEGLIGENCE IN PRODUCTION OR DELIVERY, EXCEPT FOR REPLACEMENT OR REPAIR OF THE PRODUCT, REFUND OF THE PURCHASE PRICE, OR GRANT OF A REASONABLE ALLOWANCE, IN BPB'S SOLE DISCRETION, BPB SHALL NOT, UNDER ANY CIRCUMSTANCES, BE LIABLE ON ACCOUNT OF ANY IMPERFECTION, DEVIATION FROM SPECIFICATIONS OR OTHER DEFECT IMPAIRING THE QUALITY, VALUE OR SUITABILITY FOR ANY PURPOSE OF ANY PRODUCT SOLD HEREUNDER, WHETHER PURSUANT TO THE EXPRESS LIMITED WARRANTY OR OTHERWISE, IN NO EVENT SHALL BPB BE LIABLE FOR CONSEQUENTIAL, SPECIAL, INCIDENTAL, INDIRECT, PENAL OR CONTINGENT DAMAGES, WHETHER BASED UPON BREACH OF WARRANTY, NEGLIGENCE, STRICT LIABILITY, TORT, BREACH OF CONTRACT, OR ANY OTHER LEGAL THEORY. PURCHASER ASSUMES ALL RISK OF LOSS, DAMAGE OR DELAY INCIDENT TO THE FURNISHING OF ANY PRODUCT BY BPB HEREUNDER, OR THE UTILIZATION THEREOF, EXCEPT TO THE EXTENT EXPRESSLY ABOVE PROVIDED. PURCHASER AGREES THIS HAS BEEN NEGOTIATED AND CONSENTS HERETO.



USA

BPB America Inc.

5301 West Cypress St., Suite 300
Tampa, FL 33607

Toll Free: +1 866 4 BPB USA
(1-866-427-2872)
Fax: +1 813 286 3991
E-mail: crc@bpb-na.com
Web: www.bpb-na.com

Distributed by:

Characteristics, properties or performance of materials or systems manufactured by BPB herein described are derived from data obtained under controlled test conditions. BPB makes no warranties, expressed or implied, as to their characteristics, properties or performance under any variations from such conditions in actual construction. BPB assumes no responsibility for the effects of structural movement.

©™Trademarks are the property of BPB plc or its affiliates and related companies

NOTICE: The information in this document is subject to change without notice. BPB assumes no responsibility for any errors that may inadvertently appear in this document.